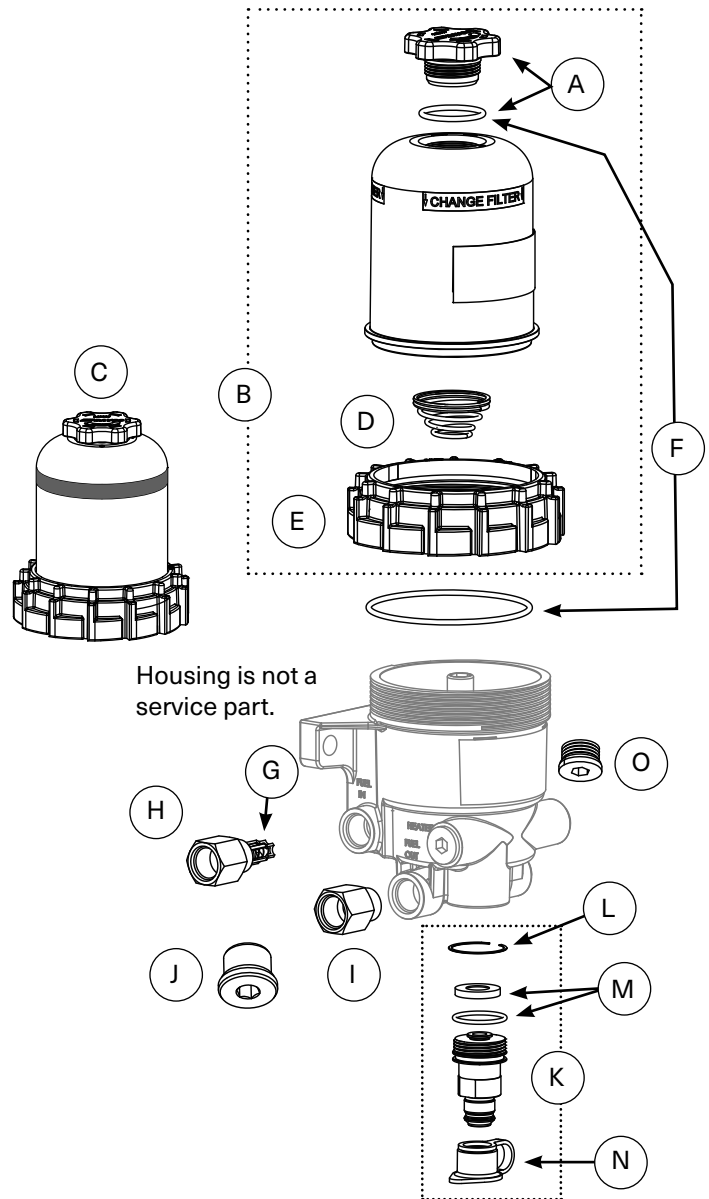


SERVICE PARTS AND KITS		
A	240023DAV	Vent Cap Service Kit (vent cap and o-ring)
B	243013SDAV	Cover Service Kit (Collar, Spring, Vent Cap and Vent Cap O-ring - Collar o-ring not included)
C	243017DAV	Cover with Red Stripe and Black Band (Collar, Spring, Vent Cap and Vent Cap O-ring - Collar o-ring not included)
D	380056DAV	Filter Spring
E	240002SDAV	Collar
F	232009DAV	O-Ring Service Kit (Vent Cap/Cover)
G	245013DAV	Check Valve Service Kit (Ball, Spring, and Retainer)
H	245010DAV	Check Valve Assembly for DTNA Includes Body (7/8"-14 to M22) and Check Valve Service Kit
	245014DAV	Check Valve Assembly Includes Body (3/8"-18) and Check Valve Service Kit
I	245011DAV	Adapter 7/8"-14 to M22
J	102821SDAV	Plug 7/8"-14
K	485022DAV	Quick Connect Drain Valve - Includes: valve body, retaining ring (L), both seals (M), drain valve and protective cap (N)
L	485025DAV	Retaining Ring
M	485021DAV	Drain Valve Seal Service Kit
N	102712DAV	Drain Valve Dust Cap
O	390456DAV	WIF Port Plug 1/2"-20
<p>Pre-heater, Overnight Heater, Priming Pump and Water in Fuel Sensor (WIF) information is on the following pages.</p>		



COLLAR WRENCHES		
P/N 232002DAV	P/N 232007DAV	P/N 243030DAV
Composite Wrench	Metal Wrench	Heavy Duty Wrench, 3/8" thick. (Use with a 3/8" socket wrench drive.)

PRE-HEATER PARTS		
103525DAV	12VDC 195W PTC Pre-heater, Weather Pack Connector, 7/8"-14 UNF Threads, Harness Length 7.50"	
103526DAV	12VDC 195W PTC Pre-heater, Metri-Pack Connector, 7/8"-14 UNF Threads, Harness Length 7.50"	
103540DAV	24VDC 195W PTC Pre-heater, Weather Pack Connector, 7/8"-14 UNF Threads, Harness Length 7.50"	
103552DAV	12VDC 195W PTC Pre-heater, Metri-Pack Connector, 7/8"-14 UNF Threads, Harness Length 7.50"	
103595DAV	12VDC 155W PTC Pre-heater, Metri-Pack Connector, 7/8"-14 UNF Threads, Harness Length 7.50" (Freightliner Only)	
102220DAV	Pre-heater Chassis Harness, Weather Pack Connector, Wire Lengths 24" and 180"	
102376DAV	Pre-heater Chassis Harness, Metri-Pack Connector, Wire Lengths 24" and 180"	
OVERNIGHT HEATER PARTS		
102145DAV	120VAC 75W Overnight heater	
101868DAV	120VAC Overnight Heater Straight Cord, Cord length: 72"	
102015DAV	120VAC Overnight Heater "Y" Cord, Cord lengths: 84" and 120"	

WATER-IN-FUEL (WIF) SENSOR PARTS		
102512DAV	Two Pin WIF, Deutsch Connector (gray), 1/2"-20 UNF Threads, Harness Length 3.36"	
102521DAV	Two Pin WIF, Deutsch Connector (black), 1/2"-20 UNF Threads, Harness Length 3.36"	
102697DAV	Two Pin WIF, Metri-Pack Connector, 1/2"-20 UNF Threads, Harness Length 17.5"	
102770DAV	Two Pin WIF, Metri-Pack Connector, 1/2"-20 UNF Threads, Harness Length 6.50" (Freightliner)	
103111DAV	Two Pin WIF, Tyco/AMP Connector, 1/2"-20 UNF Threads, Harness Length 3.25" (Paccar)	
102600DAV	Two Pin WIF Wiring Harness (Used with 102512DAV and 102521DAV) Deutsch Connector Wire Lengths 12" and 72"	
PRIMER PUMP PARTS		
103030DAV	Check Valve for Primer pump, 7/8"-14"	
103036DAV	Kit, Primer pump 1/2"-14, Includes Plunger, Tee Fitting, Check Valve and Instructions	
103292DAV	Kit, Primer pump 3/8"-18, Includes Plunger, Tee Fitting, Check Valve and Instructions	