

### The FUEL PRO® 386, 387, and 388

provides filtration and fuel water separation for diesel engines with flow rates up to 180 gallons per hour.

The three layer filter design, with filtration up to 15 microns, provides enhanced water separation capabilities for ultra-low sulfur diesel fuel with low interfacial tension.

### Applications

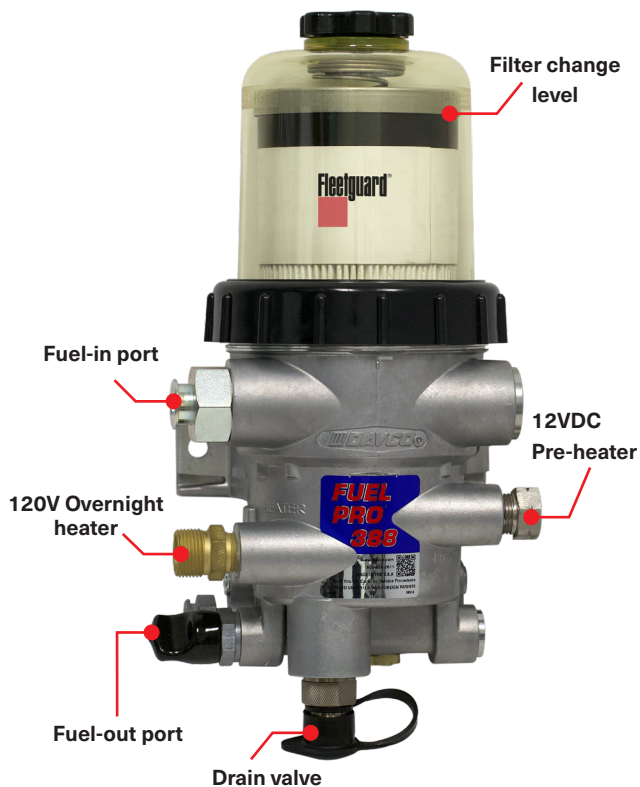
- Diesel engines with flow rates up to 180 gph

### Options

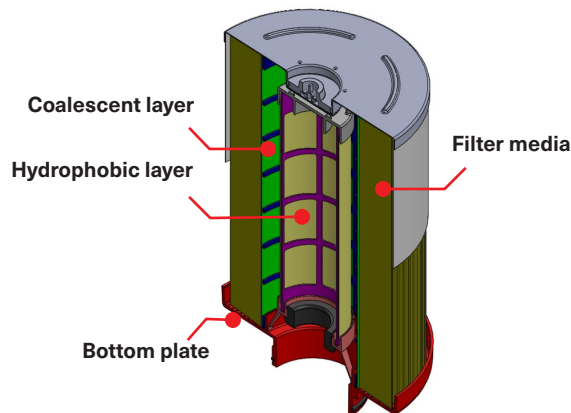
- Fuel Pro® 386: unheated
- Fuel Pro® 387: coolant heat
- Fuel Pro® 388: return fuel heat
- Heating options:
  - 12VDC or 24VDC Pre-heater: uses ignition switch to heat fuel prior to running the engine
  - 120VAC Overnight heater: prevents gelling while parked overnight
- Water-In-Fuel (WIF) sensor

### Benefits

- Seeing is Believing® - see when NOT to change your filter
- Protects diesel engines from contaminants
- Reduces maintenance downtime
- Visual troubleshooting
- Environmentally friendly filter change
- Simple filter priming for easier starts
- Biodiesel up to B20 compatible



### Filter Technology



# FUEL PRO® 386, 387, 388

## Specifications

Height, overall, quick connect drain	15.30 in. (388.6 mm)
Depth, overall	6.58 in. (167.1 mm)
Width, maximum	8.10 in. (205.8 mm)
Weight, dry	Approx. 8-12 lbs
Minimum service height	3.5 in. (38.1 mm)
Max fuel flow	180 gph
Pre-heater	12VDC, 150W 24VDC, 135W
Overnight heater	120VAC, 95W

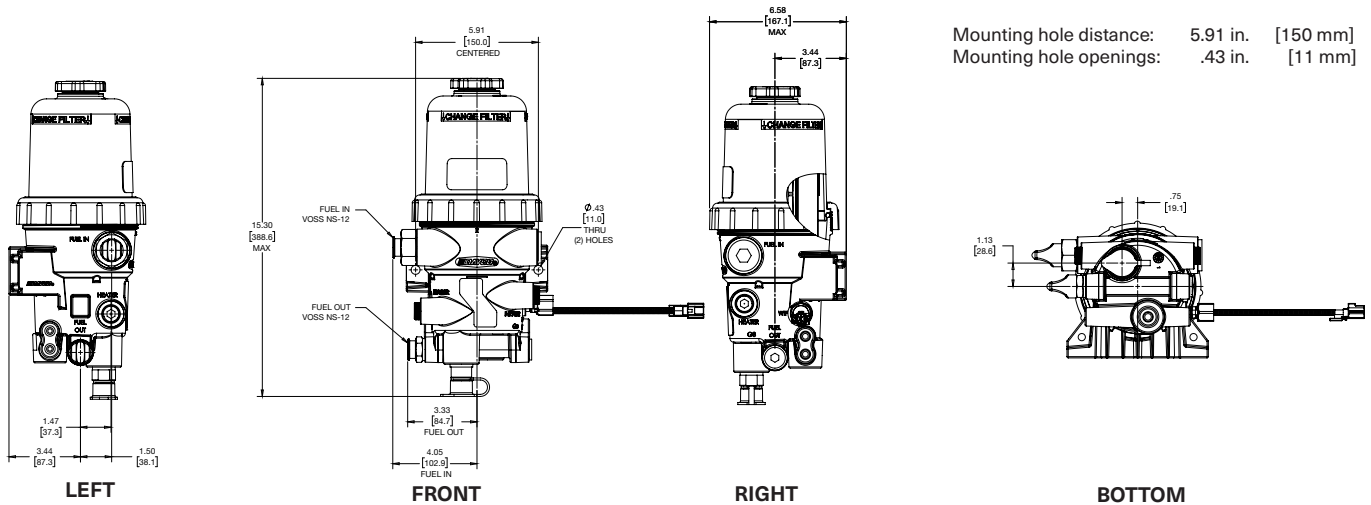
## Filtration Performance (10 micron at 174 GPH)

Emulsified water removal	SAE J1488 is 96.9%
Dirt holding capacity	89 grams

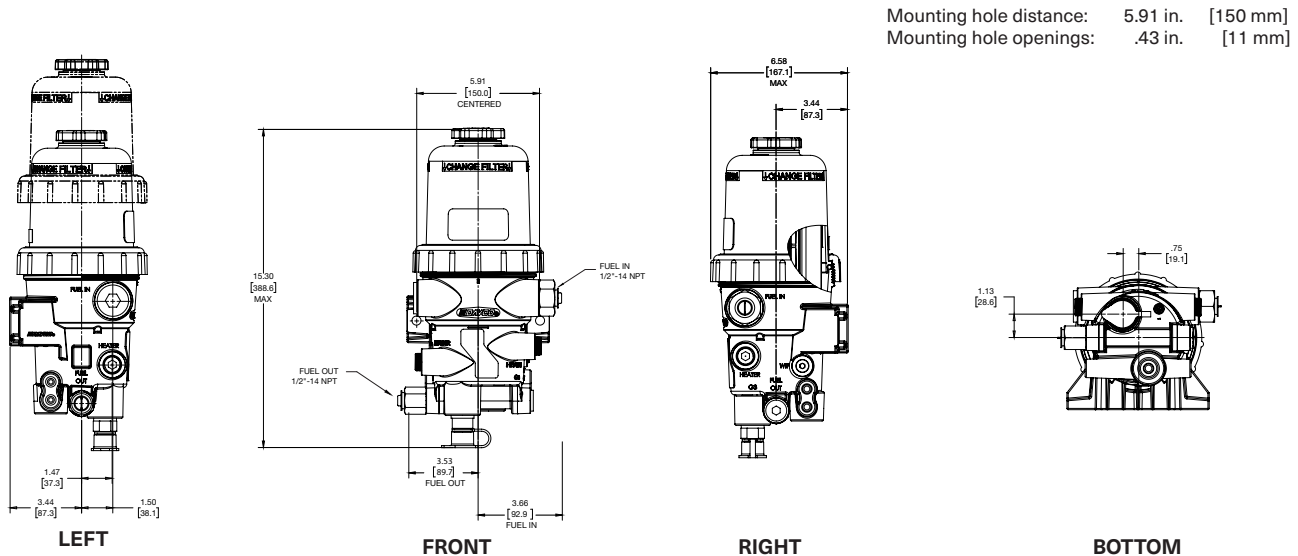
## Port Interface

Fuel-in	Voss NS-12, ½"-14 NPT
Fuel-out	Voss NS-12, ½"-14 NPT

## Dimensions (Voss Fuel-in/Fuel-out)



## Dimensions (½"-14 NPT Fuel-in/Fuel-out)



## DAVCO Technology, LLC

All statements are based on OEM fuel quality requirements. Contact your DAVCO RSM for OEM specific warranties.

© 2025 DAVCO Technology, LLC. DAVCO is a subsidiary of Clariance Technologies. All rights reserved.

